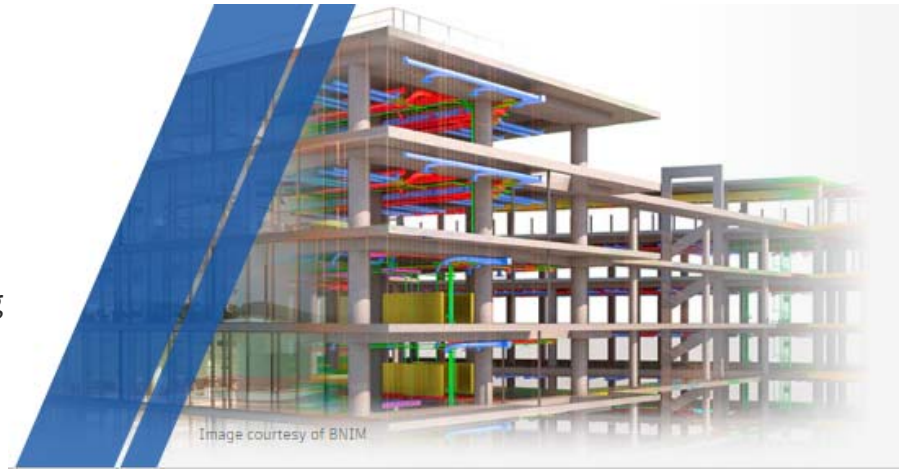


# REVIT

Plan, Design, Construct, and Manage Buildings with Powerful Tools for Building Information Modeling (BIM).



## Overview

### Create coordinated, consistent, and complete model-based designs

Use Revit® to drive efficiency and accuracy across the project lifecycle, from conceptual design, visualization, and analysis to fabrication and construction.

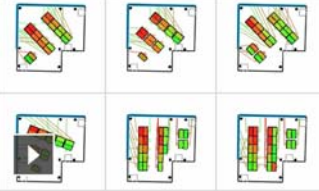

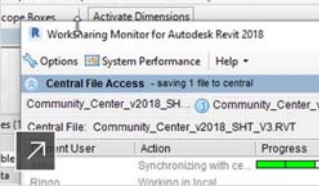

- Begin modeling in 3D with accuracy and precision.
- Automatically update floor plans, elevations, and sections as your model develops.
- Let Revit handle routine and repetitive tasks with automation so you can focus on higher-value work.


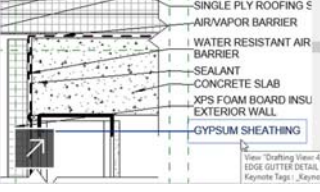
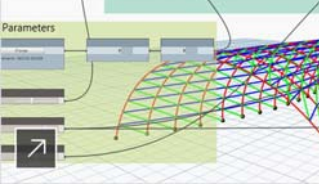



## Features

### Building information modeling software

Learn about Revit® features for BIM, the intelligent model-based method for planning, designing, constructing, and managing buildings and infrastructure. Revit supports multidiscipline design collaboration.

 <p><b>Generative Design</b> Quickly produce design alternatives based on goals and constraints you define. Available exclusively to AEC Collection</p>	 <p><b>Parametric components</b> An open, graphical system for design and form-making, and the basis for all building components designed in Revit</p>	 <p><b>Worksharing</b> Contributors from multiple disciplines can share and save their work to the same centrally shared file.</p>	 <p><b>Schedules</b> Create a tabular display of model information extracted from the properties of the elements in a project.</p>
---	---	--	---

 <p><b>Add-ins</b> Extend Revit functionality with API access, third-party solutions, add-ins, and a content library on the Autodesk App Store.</p>	 <p><b>Annotation</b> Communicate designs more effectively with WYSIWYG editing and features that let you control text appearance.</p>	 <p><b>Dynamo for Revit</b> Expand and optimize BIM workflows with an open-source graphical programming interface that installs with Revit.</p>	 <p><b>Global parameters</b> Embed design intent with projectwide parameters that work with radial and diameter dimensions and equality</p>
---	---	---	--